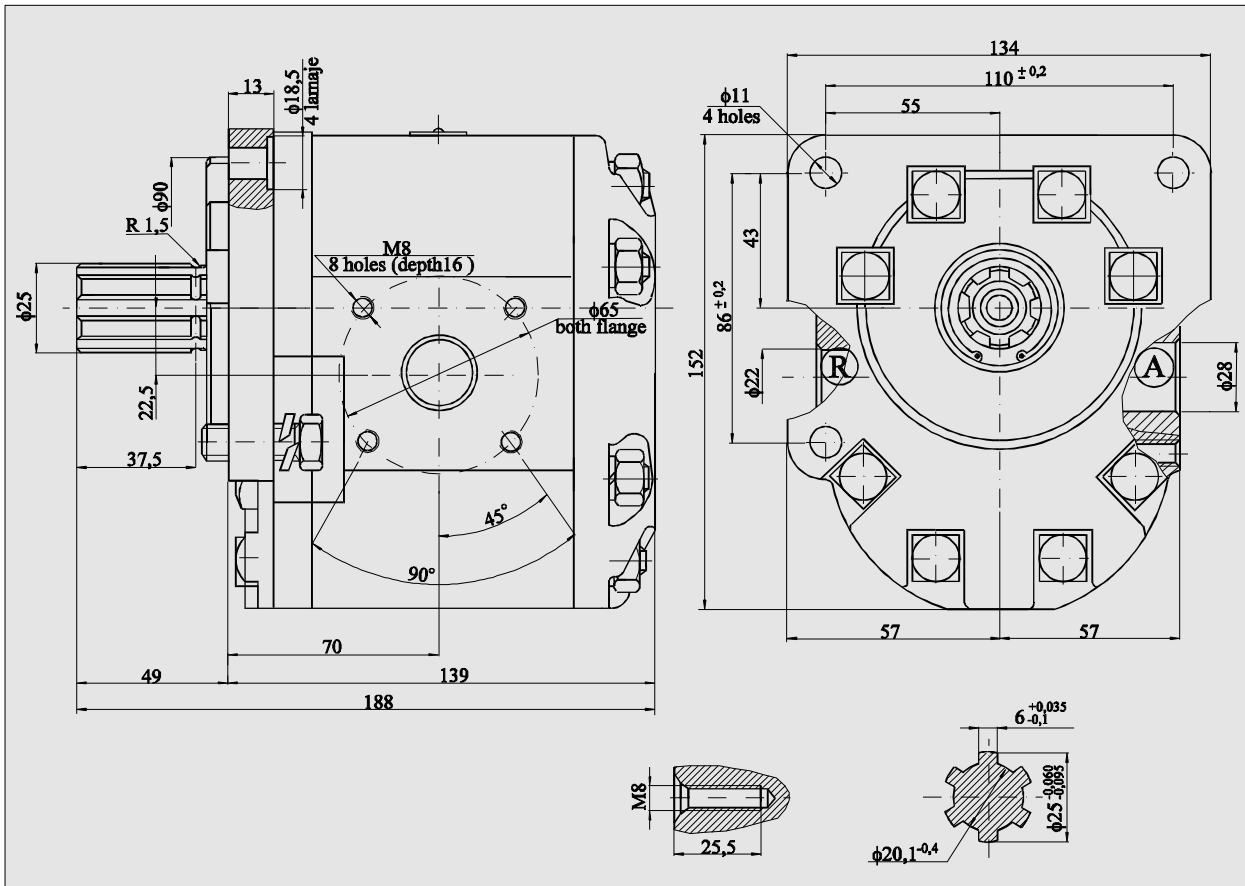


**HIDROJET**  *Breaza*

**HYDRAULIC EQUIPMENT**

**ECHIPAMENT HIDRAULIC**

## POMPA HIDRAULICA - HYDRAULIC PUMP PH 14/4



### Caracteristici

- \* Numar de sectiuni 1
- \* Debit minim 60l/min
- \* Presiune de lucru 100 Kg/cm<sup>2</sup>
- \* Presiunea maxima 130 Kg/cm<sup>2</sup>
- \* Turatie nominala 1700 rot.min
- \* Turatie maxima 2500 rot/min
- \* Turatie minima 800 rot/min
- \* Lichidul de lucru:  
ulei H 38 STAS 9691 - 80, sau  
ulei tip M 20 STAS751 - 80

- \* Temperatura de lucru normala 50<sup>0</sup>C
- \* Temperatura maxima admisa 80<sup>0</sup>C
- \* Sensul de rotatie privit dinspre  
partea antrenarii: antiorar
- \* Volum geometric 36cm<sup>3</sup>/rot
- \* Greutate 7,5 Kg

Se comanda sub reperul H 14/4 - 01 S

### Variante constructive

PH 14/4 D inlocuieste pompa FS PR ,sens de rotatie dreapta - se comanda sub reperul **H 14/4 - 00 D**

### Characteristics

- \* Number of sections 1
- \* Minimum output 60l/min
- \* Operating pressure 100 Kp/sq.cm
- \* Maximum pressure 130 Kp/sq.cm
- \* Rated speed 1700 r.p.m.
- \* Maximum speed 2500 r.p.m.
- \* Minimum speed 800 r.p.m.
- \* Operating fluid:

TELLUS 33, TELLUS 133,  
HYDRAULIQUE 130, ETNA 26  
ENERGOL HL - 100  
ENERGOL CS - 125, TERESSO 52  
SHELL VITREA 31/33/37 DIE  
OIL MEDIUL

- \* Operating temperature 50<sup>0</sup>C
- \* Maximum permissible temperature 80<sup>0</sup>C
- \* Revolving sense : anti - clockwise  
(looking from drive side)

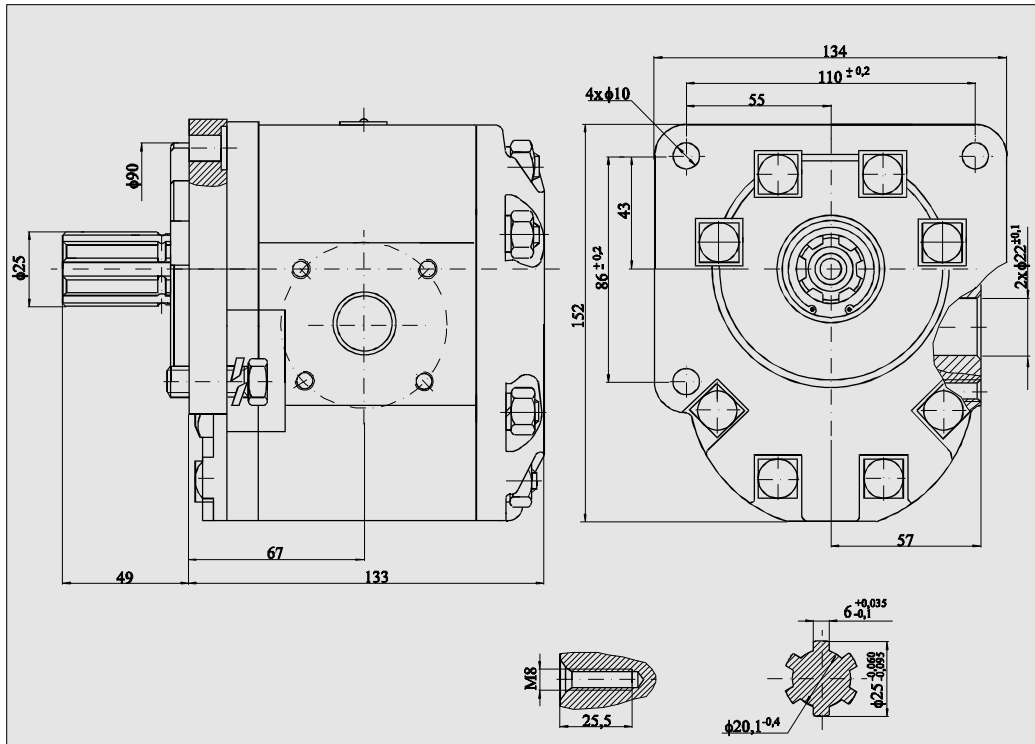
- \* Weight 7,5 Kg

To be ordered part no H 14/4 - 01 S

### Constructive variant

It replaces the FS PR 4 pump, revolving sense: right to be ordered under part no **H 14/4 - 00 D**

## POMPA HIDRAULICA - HYDRAULIC PUMP PH 12/26



### Caracteristici

- \* Debit minim 34 l/min.
- \* Presiune de lucru 100 Kg/cm<sup>2</sup>
- \* Presiunea maxima 130 Kg/cm<sup>2</sup>
- \* Turatie nominala 1300rot/min
- \* Turatie maxima 2500 rot/min
- \* Turatie minima 800 rot/min
- \* Lichid de lucru :  
ulei T 7 EP 1 STAS 10667 - 87,  
sau ulei M 20 STAS 751 - 80

- \* Temperatura de lucru normala 50<sup>0</sup> C
- \* Temperatura maxima admisa 80<sup>0</sup> C
- \* Sens de rotatie privit dinspre partea antrenarii: antiorar
- \* Volum geometric 30 cm<sup>3</sup>/rot
- \* Greutate 7 Kg

Se comanda sub reperul H 12 - 00 26 S  
( fara roata de antrenare )

#### Variante constructive

- H 12 - 00 26** Inlocuieste pompa FS PR 1, sens de rotatie stanga
- H 12 - 01 26** Cu roata de antrenare 26 12 123 1 sens de rotatie: stanga
- H 12 - 01 26 SL** Se utilizeaza ca pompa de transfer la locomotiva LDH
- H 12 - 01 26 SM** Se utilizeaza pe autobasculanta sens de rotatie : dreapta

### Characteristics

- \* Minimum output 34 l/min.
- \* Operating pressure 100 Kp/sq.cm
- \* Maximum pressure 130 Kp/sq.cm
- \* Rated speed 1300 r.p.m.
- \* Maximum speed 2500 r.p.m.
- \* Minimum speed 800 r.p.m.
- \* Operating fluid :  
SHELL VITREA 31/33/37  
SHELL 100 - 20 W  
DTE OIL MEDIUM : ENERGOL  
CS 125, MOBILUBE  
GEAR OIL GP 80,  
TRACTOR UNIVERSAL OIL S
- \* Operating temperature 50<sup>0</sup> C (optimum)
- \* Maximum permissible temperature 80<sup>0</sup> C
- \* Revolving sense: anti - clockwise (looking from drive side)

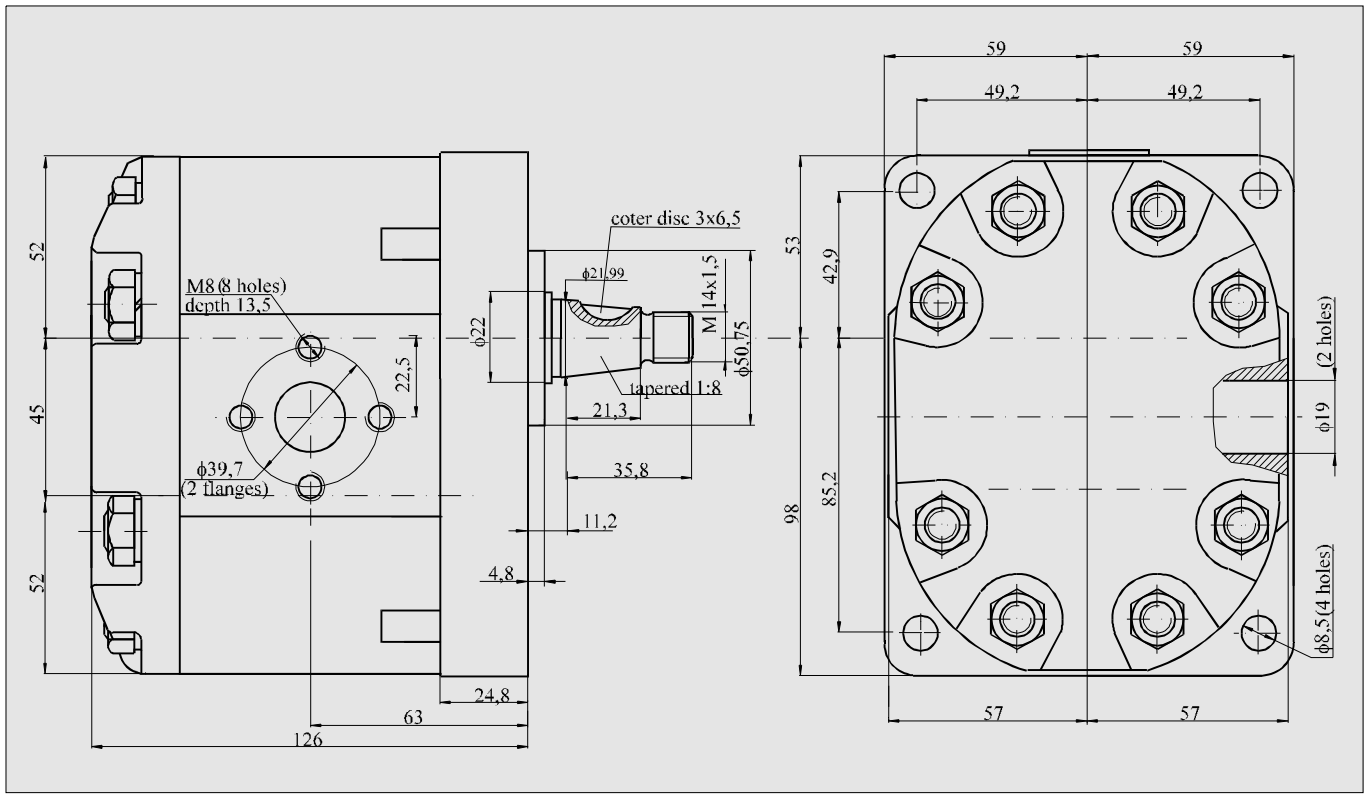
- \* Weight 7 Kg

To be ordered under part no H 12 - 00 26 S  
( Without drive gear )

#### Constructive variant

- H 12 - 00 26** It replaces the FS PR 1 pump, revolving sense : left
- H 12 - 01 26** With carrying wheel 26 12 123 1, revolving sense : left
- H 12 - 01 26 SL** It is used as transfer pump for LDH locomotive
- H 12 - 01 26 SM** It is user for weighing mashines, revolving sense : right

## POMPA HIDRAULICA - HYDRAULIC PUMP PH 12



### Caracteristici

- \* Numar de sectiuni 1
- \* Turatie nominala 2200 rot/min
- \* Presiunea maxima de lucru 175 Kg/cm<sup>2</sup>
- \* Debitul la presiunea de lucru 40 l/min
- \* Volum geometric 20 cm<sup>3</sup>/rot
- \* Puterea de antrenare 15,5 Kw
- \* Sensul de rotire privit dinspre antrenare: orar
- \* Lichidul de lucru: ulei aditivat impotriva oxidarii , corodarii si formarii spumei. Viscositatea uleiului sa fie cuprinsa intre 36 - 40 cSt la 50<sup>0</sup>C si 7,4 cSt la 100<sup>0</sup>C
- \* Temperatura normala de lucru a uleiului 50<sup>0</sup>C
- \* Temperatura maxima de lucru a uleiului 80<sup>0</sup>C
- \* Masa 5,1 Kg

Se comanda sub reperul H 12 - 00

#### Varianta constructiva

Se comanda sub reperul H 12 - 00 S

Sensul de rotire, privit dinspre antrenare:  
antiorar

### Characteristics

- \* Number of sections 1
- \* Rated speed 2200 r.p.m.
- \* Maximum operating pressure 175 Kp/sq.cm
- \* Output at operating pressure 40 l/min
- \* Drive power 15,5 Kw
- \* Revolving sense, looking from drive side: clockwise
- \* Operating fluid: oil with anti - foaming, anti - oxidating and anti - corrosive additive. Oil viscosity must be between 36 - 40 cSt at 50<sup>0</sup>C and 7,4 cSt at 100<sup>0</sup>C
- \* Oil operating temperature 50<sup>0</sup>C
- \* Maximum oil temperature 80<sup>0</sup>C
- \* Weight 5,1 Kg

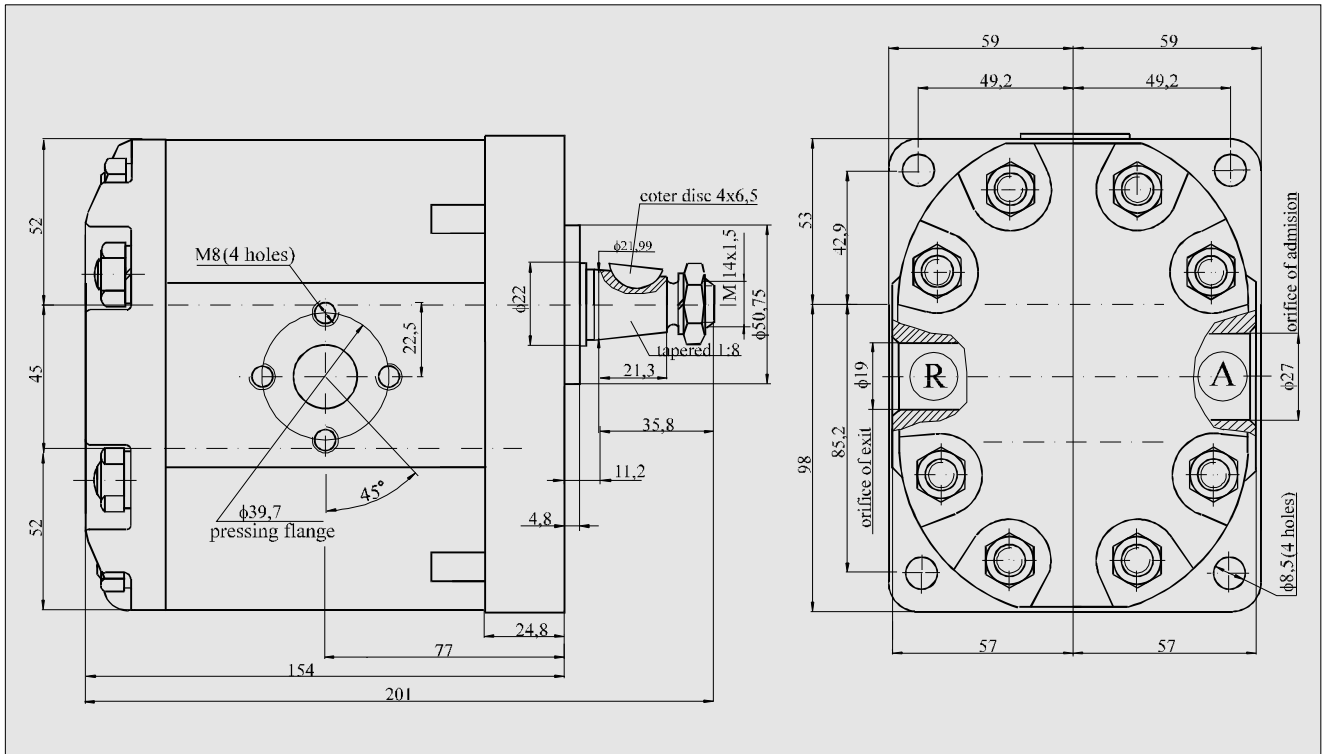
To be ordered under part no H 12 - 00

#### Conctructive variant

To be ordered under part no H 12 - 00 S

Revolving sense, looking from drive side:  
anti - clockwise

## POMPA HIDRAULICA - HYDRAULIC PUMP PH 14



### Caracteristici

- \* Numar de sectiuni 1
- \* Turatie nominala 2200 rot/min
- \* Turatie maxima 2500 rot/min
- \* Turatie minima 800 rot/min
- \* Presiune nominala 150 Kg/cm<sup>2</sup>
- \* Presiune maxima 175 Kg/cm<sup>2</sup>
- \* Debitul la presiunea de lucru 60 l/min
- \* Volum geometric 30 cm<sup>3</sup>/rot
- \* Puterea de antrenare 21,5 Kw
- \* Sens de rotatie privit dinspre antrenare:  
orar
- \* Lichidul de lucru: ulei aditivat impotriva oxidarii, corodarii si formarii spumei.  
Vascozitatea uleiului sa fie cuprinsa intre 29 - 45 cSt la 50<sup>0</sup>C si de 6,5 cSt la 100<sup>0</sup>C
- \* Temperatura normala de lucru a uleiului 50<sup>0</sup>C
- \* Temperatura maxima de lucru a uleiului 80<sup>0</sup>C

\* Masa 7,1 Kg

Se comanda sub reperul H 14 - 01 D

#### Varianta constructiva

Se comanda sub reperul H 14 - 01 S

Sens de rotire privit dinspre antrenare: antiorar

### Characteristics

- \* Number of sections 1
- \* Rated speed 2200 r.p.m.
- \* Maximum speed 2500 r.p.m.
- \* Minimum speed 800 r.p.m.
- \* Operating pressure 150 Kp/sq.cm
- \* Maximum pressure 175 Kp/sq.cm
- \* Output: 60 l/min

\* Drive power 21,5 Kw

\* Revolving sense looking from drive side:  
clockwise

\* Operating fluid: oil with anti - foaming,  
anti - oxidating and anti - corrosive  
additive. Oil viscosity must be between  
29 - 45 cSt at 50<sup>0</sup>C and 6,5 cSt at 100<sup>0</sup>C

\* Oil operating temperature 50<sup>0</sup>C

\* Maximum permissible temperature  
of the oil 80<sup>0</sup>C

\* Weight 7,1 Kg

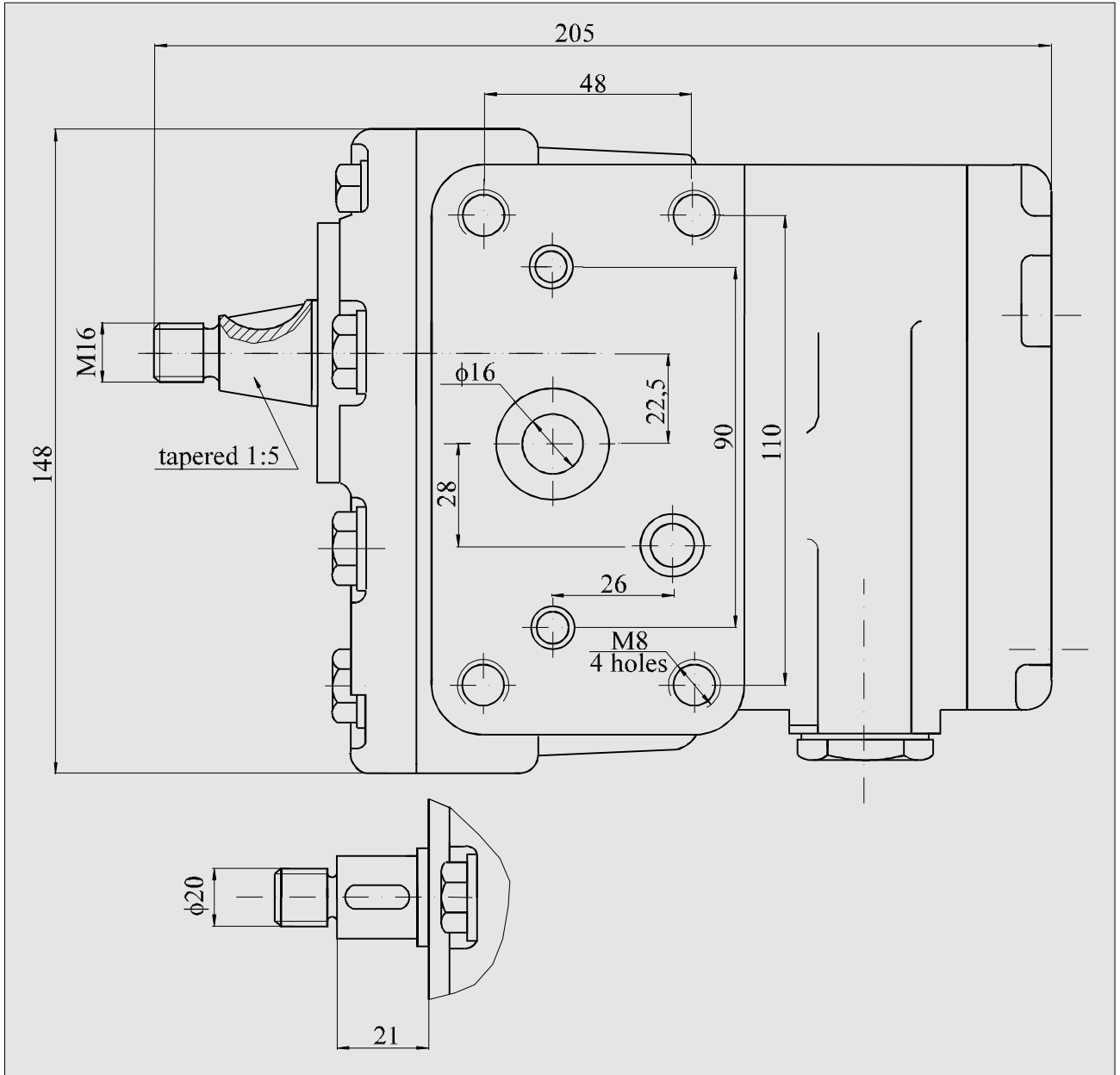
To be ordered under part no H 14 - 01 D

#### Constructive variant

To be ordered under part no H 14 - 01 S

Revolving sense, looking from drive side:  
anti - clockwise

**POMPA HIDRAULICA - HYDRAULIC PUMP  
PH 8**



## POMPA HIDRAULICA - HYDRAULIC PUMP PH - 8

### Caracteristici

- \* Numar de sectiuni 2
- \* Admisia este comuna pentru ambele sectiuni, iar refularea separata.
- \* Diametrul orificiului de admisie  $\phi 34$  mm
- \* diametrul orificiului de refulare:
  - pentru sectiunea instalatiei hidraulice  $\phi 13$  mm
  - pentru sectiunea servo-directiei hidraulice  $\phi 10$  mm
- \* Lichidul de lucru ulei: M20 STAS 751 - 80, sau ulei 775 EP 1 STAS 10667 - 80
- \* Temperatura uleiului de refulare
  - la verificarea debitului  $50^{\circ}$  C
  - maxima de regim  $80^{\circ}$  C
- \* Turatia nominala 2200 rot/min
- \* Sensul de rotatie privit din partea antrenarii: orar
- \* Greutatea 7 Kg

### Sectiunea instalatiei hidraulice

- \* Debit minim 40 l/min
- \* Presiunea de lucru 120 Kg/cm<sup>2</sup>
- \* Presiunea maxima de scurta durata 150 Kg/cm<sup>2</sup>
- \* Presiunea maxima este limitata de supapa de siguranta montata in corpul distribuitorului hidraulic.
- \* Volum geometric 20 cm<sup>3</sup>/rot

### Sectiunea servo - directiei hidraulice

- \* Debit minim 10l/min
- \* Presiunea de lucru 50 kgf/cm<sup>2</sup>
- \* Volum geometric 10 cm<sup>3</sup>/rot
- \* Presiunea maxima de scurta durata 80 Kg/cm<sup>2</sup>
- \* Este prevazuta cu supapa pentru mentinerea constanta a debitului la variatia turatiei

Se comanda sub reperul H 8 - 01

( antrenare prin cuplaj cu arbore conic 1: 5)

### Variante constructive

- H 8 - 01 - 1** Cu roata de antrenare, fixata pe arbore cilindric
- H 8 -01 M** Fara roata de antrenare
- H 8 - 01 Fc** Cu capac de fonta, pinion de antrenare,conicitate 1:5

### Characteristics

- \* Number of sections 2
- \* Common admission for both sections and separate delivery
- \* Intel part diameter 34 mm
- \* Delivery part diameter :
  - for hydraulic system section 13 mm
  - for pover steering section 10 mm
- \* Operating fluid SHELL VITREA 31/33/37 SHELL 100 W,D+E OIL MEDIUM ENERGOL, CS 125, MOBILUBE C80 GEAR OIL GP 80, TRACTOR UNIVERSAL OIL.
- \* Delivery oil temperature:
  - for output check  $50^{\circ}$  C
  - maximum value during operation  $80^{\circ}$  C
- \* Rated speed 2200 r.p.m.
- \* Revolving sense looking from drive side: clockwise
- \* Weight 7 Kg

### Hydraulic sistem section

- \* Minimum output 40 l/min
- \* Operating pressure 120 Kp/sq.cm
- \* Maximum pressure is limited by the pressure relief valve incorporated in control valve body.

### Pover steering section

- \* Minimum output 10 l/m
- \* Operating pressure 50 Kp/sq.cm
- \* Maximum pressure for a short period 80 Kp/sq.cm
- \* A valve keeps output at a constant value during the speed variation.

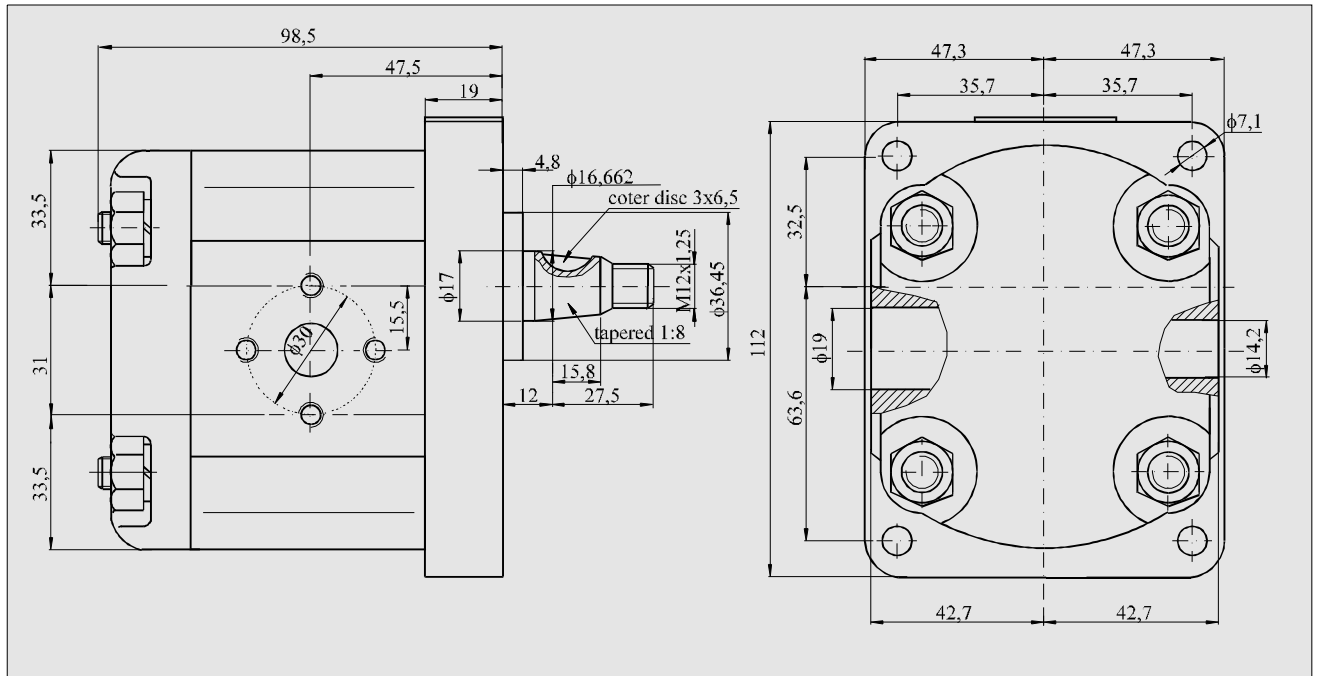
To be ordered under part no H 8 - 01

( with coupling drive and shaft tapend head 1:5 )

### Constructive variant

- H 8 - 01 - 1**With drive gear fitted on cylindrical shaft
- H 8 - 01 M** Without drive gear
- H 8 - 01 Fc** With cast iron cap, gear, conicity 1:5

## POMPA HIDRAULICA - HYDRAULIC PUMP PH 13



### Caracteristici

- \* Numar de sectiuni 1
- \* Turatia nominala 2200 rot/min
- \* Presiunea maxima de lucru 100 Kg/cm<sup>2</sup>
- \* Debitul la presiunea de lucru 20 l/min
- \* Volum geometric 10 cm<sup>3</sup>/rot
- \* Puterea de antrenare 7 Kw
- \* Sensul de rotire privind dinspre antrenare: antiorar
- \* Lichidul de lucru:  
ulei aditivat impotriva oxidarii, corodarii si formarii spumei.  
Vascozitatea uleiului sa fie cuprinsa intre 36-40 cSt la 50° C si de 7,4 cSt la 100° C
- \* Temperatura normala de lucru a uleiului 50° C
- \* Temperatura maxima a uleiului 80° C
- \* Masa 2,3 Kg
- \* Diametrul orificiului de admisie  $\phi 19$
- \* Diametrul orificiului de refulare  $\phi 14,2$

Se comanda sub reperul H 13 - 00

### Characteristics

- \* Number of sections 1
- \* Rated speed 2200 r.p.m.
- \* Maximum operating pressure 100 Kp/sq.cm
- \* Output at operating pressure 20 l/min
- \* Drive power 7 Kw
- \* Revolving sense looking from drive side: anti-clockwise
- \* Operating fluid:  
oil with anti-foaming, anti-oxidating and anti-corrosive additive.  
Oil viscosity must be between 36-40 cSt at 50° C and 7,4 cSt at 100° C
- \* Oil operating temperature 50° C
- \* Maximum oil temperature 80° C
- \* Weight 2,3 Kg
- \* Inlet part diameter  $\phi 19$
- \* Delivery part diameter  $\phi 14,2$

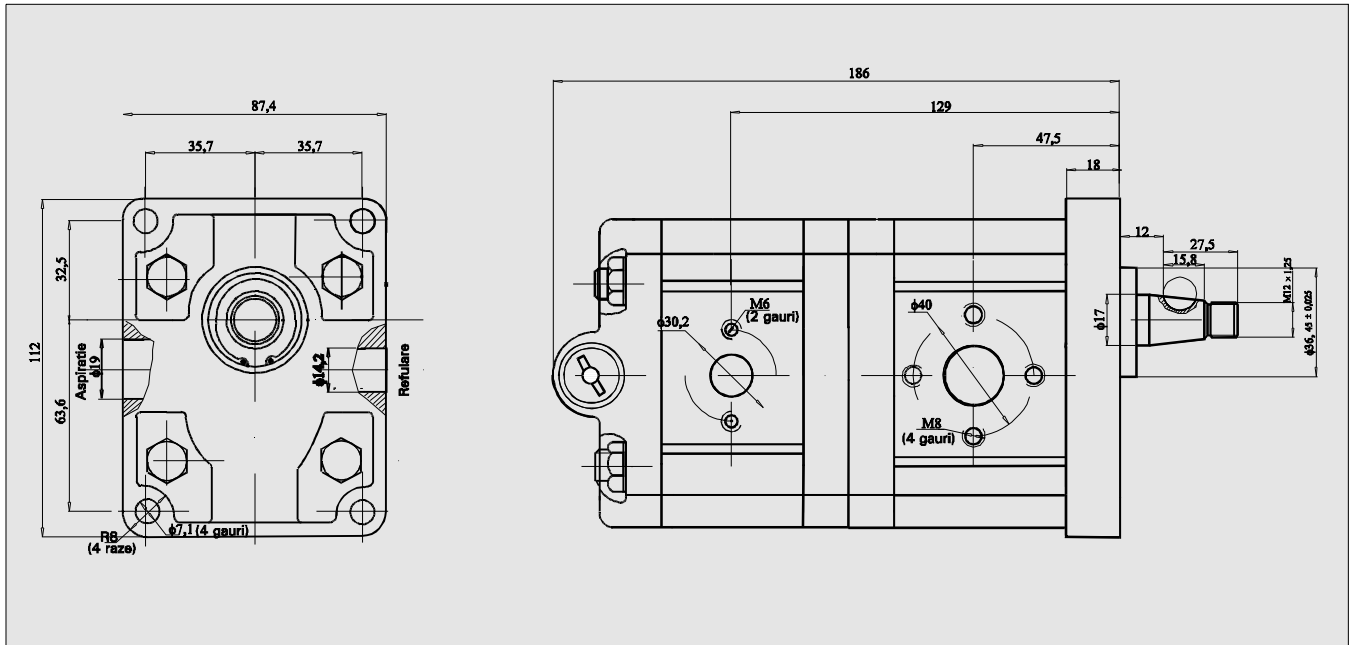
To be ordered under part no H 13 - 00



## POMPA HIDRAULICA DUBLA HD015-C1S1 DOUBLE HYDRAULIC PUMP HD015-C1S

Pompele duble fac parte din circuitul hidraulic de forta al combinelor agricole C12,C17,C12M,C14,C17,C70,C80,C110,C140

The double pumps are parts from the hydraulic force-circuit of combines mentioned above.



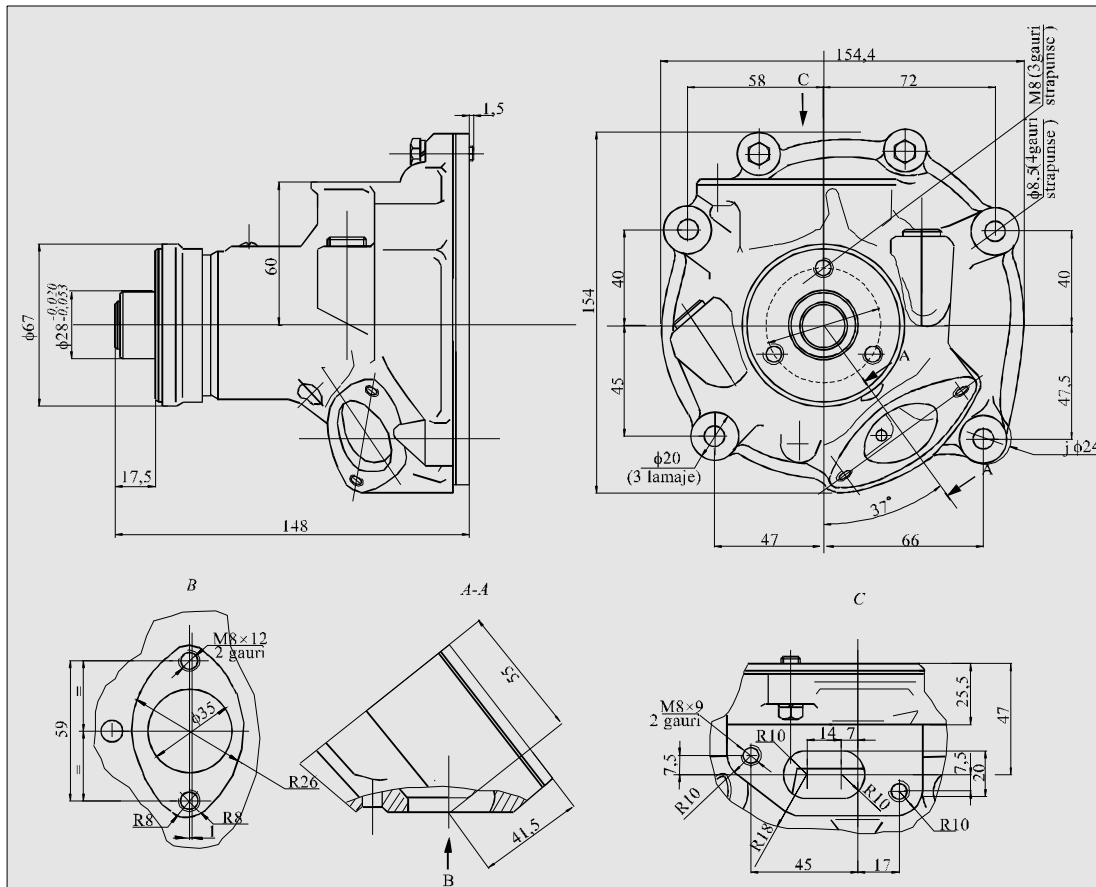
### CARACTERISTICI

- Numar de sectiuni: 2
- Admisia si refularea separata pentru fiecare sectiune
- Debit minim: 27,6/10,8 l/min.
- Presiunea de lucru: 140/60 bar
- Presiunea maxima: 175/220 bar
- Cilindree: 11,5/4,5 cmc rot.
- Lichidul de lucru: ulei aditivat impotriva oxidarii si corodarii, a formarii spumei. Vascozitatea uleiului este cuprinsa intre 36-40cSt la 50 grd. si 7,4cSt la 100 grd.
- Temperatura norma la de lucru a uleiului: 50 grd.C.
- Temperatura maxima a uleiului: 80 grd.C
- Turatia nominala: 2200 rot/min.
- Sensul de rotatie privit dinspre antrenare: orar
- Puterea de antrenare: 14KW

### CHARACTERISTICS

- Number of sections: 2
- Separate admission and pressing for each section
- Minimum flow: 27.6/10.8 l per min.
- Operating pressure: 140/60 bar
- Maximum pressure: 175/220 bar
- Capacity: 11.5/4.5 cmc rot.
- Operating fluid: oil with antifoaming, antioxidating a anticorrosive additive. Oil viscosity must be between 36-40cSt at 50 drg. and 7.4 at 100 drg.
- Oil operating temperature: 50 drg.C
- Max. permissible oil temperature: 80 drg.C
- Rated speed: 2200 rot. per minute
- Revolving sense looked from driving-side: clockwise
- Driving power: 14KW

## POMPA DE APA PA10-01 WATER PUMP PA10-01



Reper de comanda: **PA10-01**

Interschimbabil cu 115.11.010 UTB

**Utilizare:** motoarele D111,D115,D127,D2601 si variantele lor

**Destinatie:** asigura circularea forzata a lichidului de racire (apa sau amestec apa-antigel)

**Functionare:**

- \* pompa de tip centrifugal cu rotor cu palete,cu o singura treapta
- \* pompa este actionata de motor prin curea trapezoidala si functioneaza inecat

**CARACTERISTICI TEHNICE**

- \* **debitul minim:** 4200l/h(la o turatie de 3000rot/min si o presiune de refulare de 0,7kgf/cmp
- \* **Presiune de refulare minima:** 0.8 kgf /cmp
- \* **Dimensiuni de gabarit:** 154x155x148 mm
- \* **Masa neta:** 5 Kg

To be ordered under: **PA10-01**

Interchangeable with: 115.11.010 UTB

**Use:** D111,D115,D127,D2601 engines and their variants

**Purpose:** it provides the forced circulation of the cooling fluid(water or antifreeze solution)

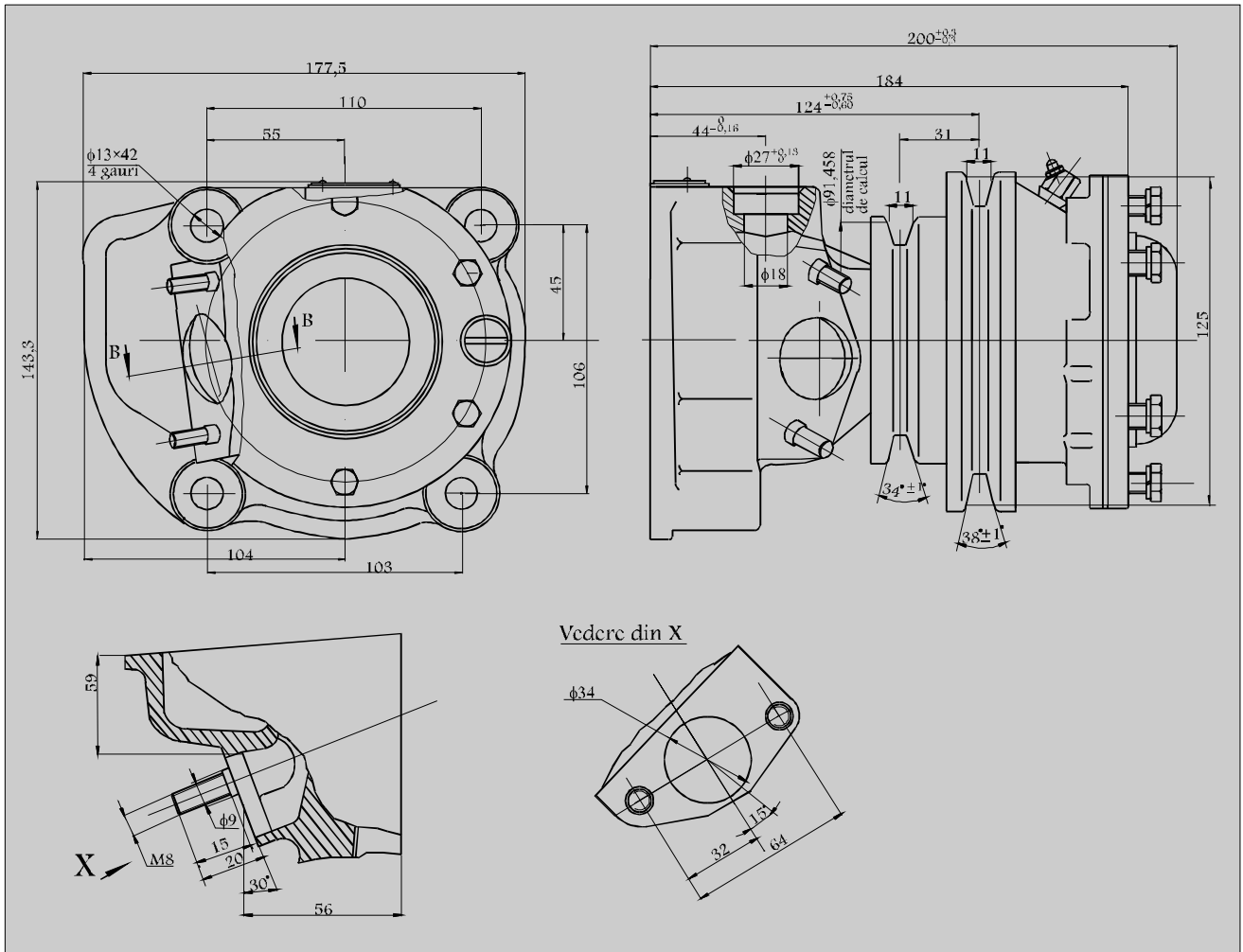
**Functioning:**

- \* single-stage centrifugal pump with impeller
- \* the pump is actioned by the engine through a trapezoidal belt and it works flooded

**TECHNICAL FEATURES**

- \* **min.flow:**4200 l per hour (at a speed of 3000rpm and a lifting pressure of 0.7 Kgf per sqcm
- \* **min.lifting pressure:** 0.8 Kgf per sqcm
- \* **overall dimensions:** 154x155x148 mm
- \* **net weight:** 5 Kg

## POMPA DE APA PA11-01 WATER PUMP PA11-0



Reper de comanda : **PA11-01**

Interschimbabil cu D110 1307000 UTB

**Utilizare:** echiparea motoarelor D118 si a variantelor aflate in exploatare

**Destinatie:** asigura recircularea apei in sistemul de racire al motorului

**Functionare:**

- \* pompa de tip centrifugal cu rotor cu palete, cu o treapta
- \* pompa este actionata de motor prin curea trapezoidală si functioneaza inecat

### CARACTERISTICI TEHNICE

- \* debitul minim: 116l/min (la o turatie de 2400rot/min si o inaltime de refulare de 1m/73,56mmHg )
- \* Presiunea max. de refulare:
- \* Dimensiuni de gabarit: 144x178x200 mm
- \* Masa neta: 10 Kg

To be ordered under : **PA11-01**

Interchangeable with D110 1307000 UTB

**Use:** to equip the D118 engines and their variants

**Purpose:** it provides the water cycling into the motors cooling system

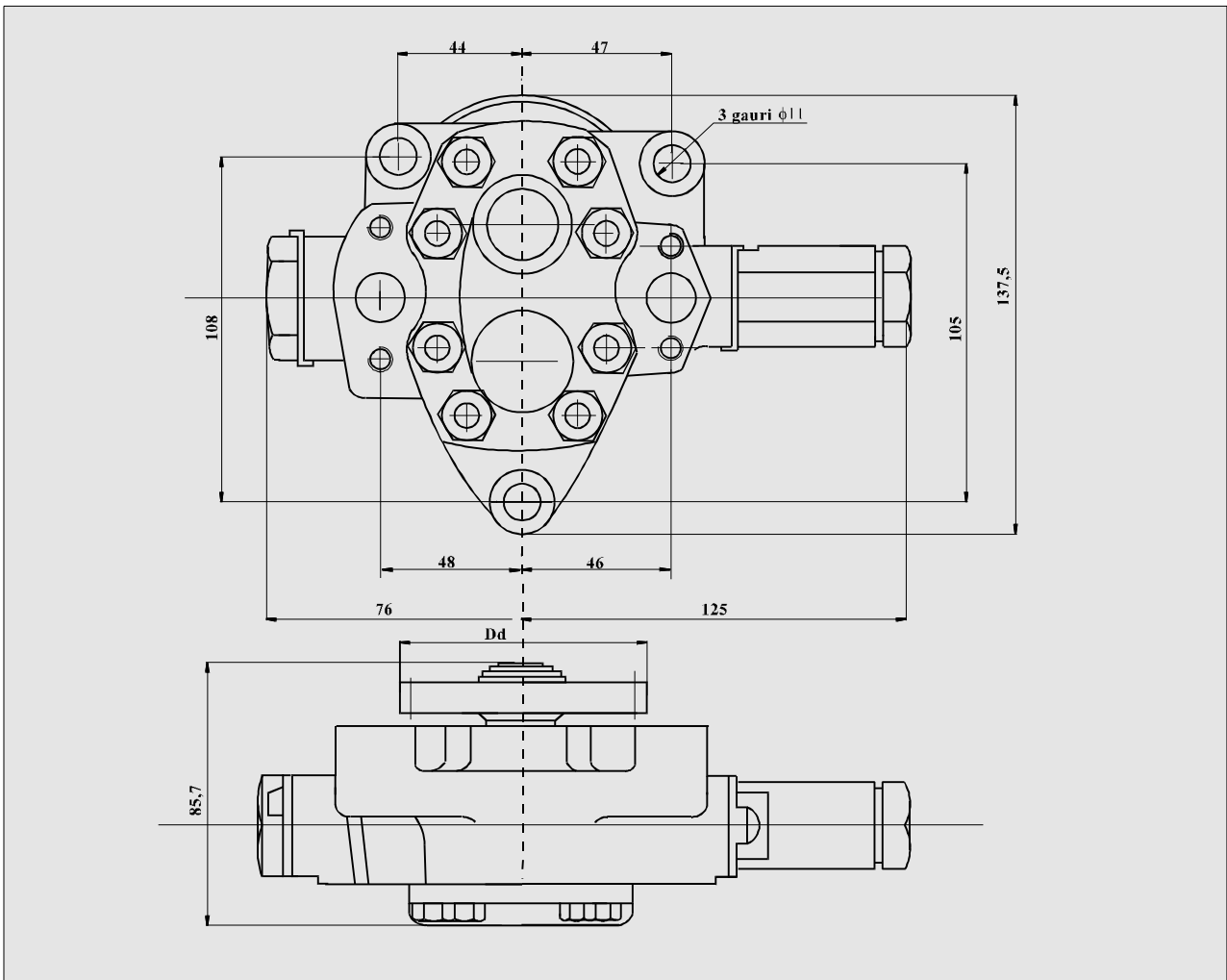
**Functioning;**

- \* single-stage centrifugal pump with impeller
- \* the pump is actioned by the engine through a trapezoidal belt and it works flooded

### TECHNICAL FEATURES

- \* minimum flow: 116l per min. (the speed is 2400rot per min. and the suction column height is 1m/73.56mmHg)
- \* maximum lifting pressure:
- \* overall dimensions: 144x178x200 mm
- \* net weight: 10 K

**POMPA DE UNGERE CU ROTI DINTATE  
OIL PUMP WITH GEAR WHEELS**



Reper de livrare : **121.08.020**

**Utilizare:** ungerea motorului D121 si variantele sale

**CARACTERISTICI TEHNICE**

- \* numar de sectiuni
- \* echipat cu supapa de limitare a presiunii uleiului
- \* presiunea de deschidere a supapei de limitare: 5+0,2bari
- \* presiunea de refulare: 4 bari
- \* temperatura uleiului: 95+5 C
- \* lichidul de lucru: ulei M30 SUPER2  
ulei M30 EXTRA
- \* turatia nominala: 1364 rot/min  
maxima : 1450 rot/min  
minima : 341 rot/min

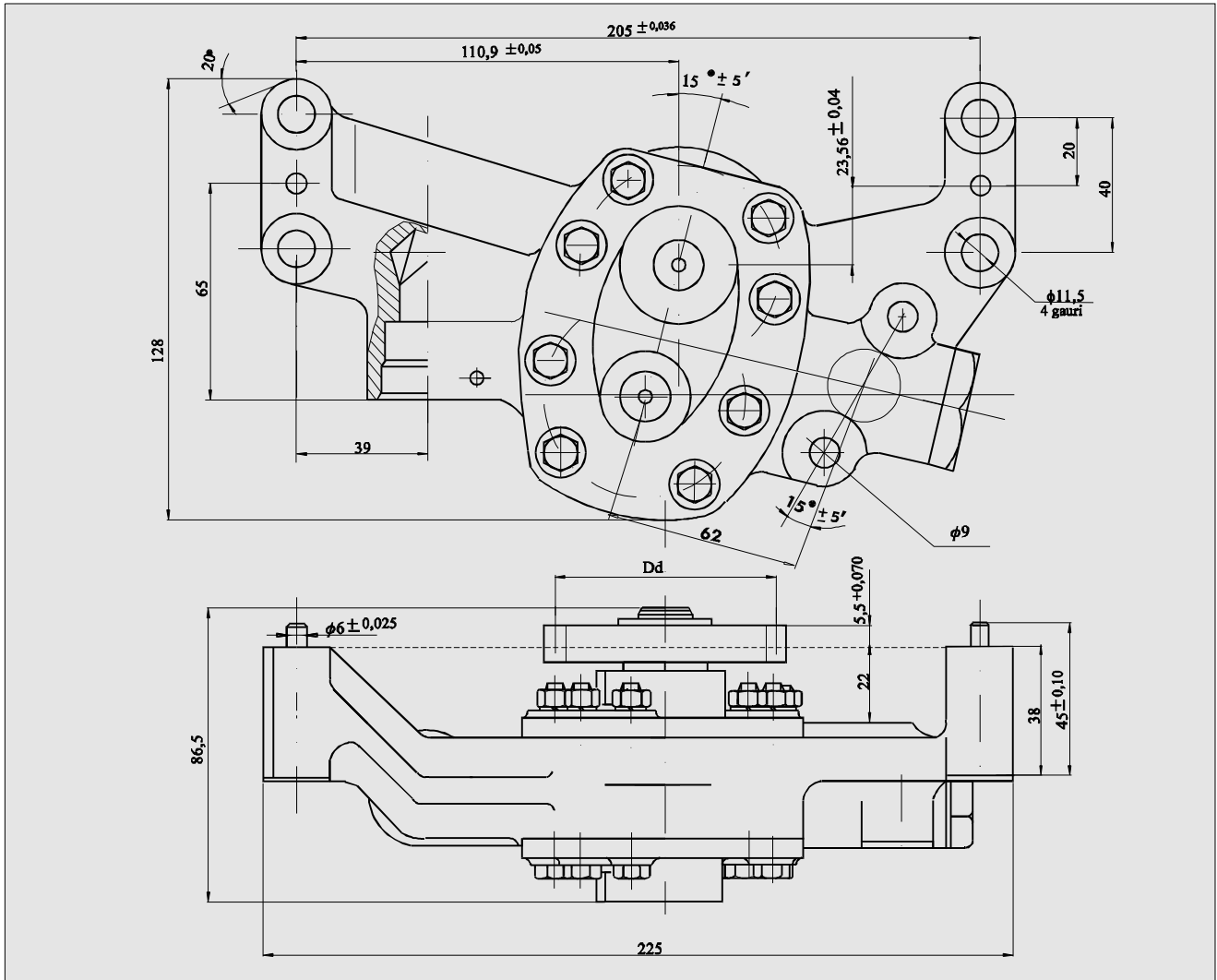
To be ordered under no. **121.08.020**

**Use:** lubrication of the D121 engine and it variants

**TECHNICAL FEATURES**

- \* number of sections: 1
- \* equipped with a valve, to limit the oil pressure
- \* the opening pressure of the regulating valve: 5+0.2bar
- \* lifting pressure: 4 bars
- \* oil temperature: 95+5 C
- \* the oil used: M30 SUPER2 oil  
M30 EXTRA oil
- \* rotating speed: 1364 rpm  
maximum speed : 1450 rpm  
minimum speed : 341 rpm

## POMPA DE ULEI OIL PUMP



Reper de comanda To be ordered under no;	Interschimbabil cu : Interchangeable with:	Utilizare Use	Roata de antrenare Driving Wheel
H19/31-01		motor D110 (65CP, 70CP)	Dd = 65,721
H19/30-01	118.08.010	motor 2402 (80CP AVL)	Dd = 80,009

\* Destinatie : asigura transportul uleiului sub presiune in circuitul de ungere al motorului .

Purpose: it assures the transfer of the pressured oil into the motor greasing circuit.

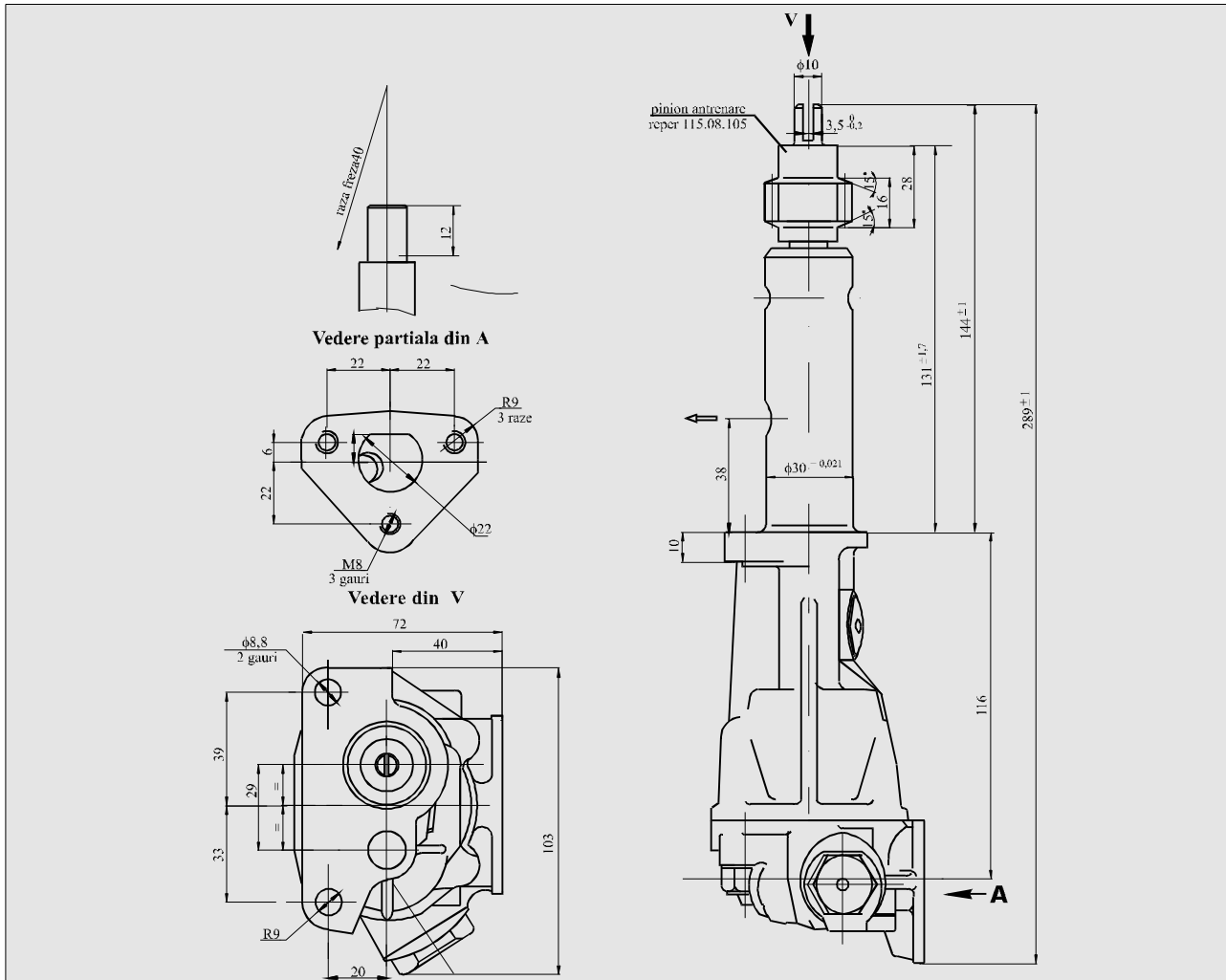
### CARACTERISTICI TEHNICE

### TECHNICAL FEATURES

- \* debit minim: 46,6 l/min.(la o turatie de 1885 rot/min si o presiune de refulare 3,5-4bar)
- \* inaltimea de aspiratie: 250 mm
- \* dimensiuni de gabarit: 225x128x87 mm
- \* masa neta : 4 Kg

- \* min.flow: 46.6 l per min.(at a speed of 1885rot per min and a lifting flow 3.5-4bar)
- \* the suction column height: 250 mm
- \* overall dimensions: 225x128x87 mm
- \* net weight : 4 kg

## POMPA DE UNGERE OIL PUMP



Reper de livrare: **115.08.010**

**Utilizare:** echiparea motoarelor de tractor de 45CP  
D111,D115,D127

**Destinatie:** asigura transportul uleiului sub presiune  
in circuitul de ungere al motorului

### CARACTERISTICI TEHNICE

- \* **debit minim:** 1,9l/min (la o turatie de 300rot/min si o presiune de refulare de 5bar )  
23l/min (la o turatie de 1200rot/min si o presiune de refulare de 5bar )
- \* **inaltime de aspiratie:** 200+10mm
- \* **timpul de amorsare:** max. 3s
- \* **dimensiuni de gabarit:** 289x103x72 mm
- \* **masa neta :** 1,5 Kg .

To be ordered under no: **115.08.010**

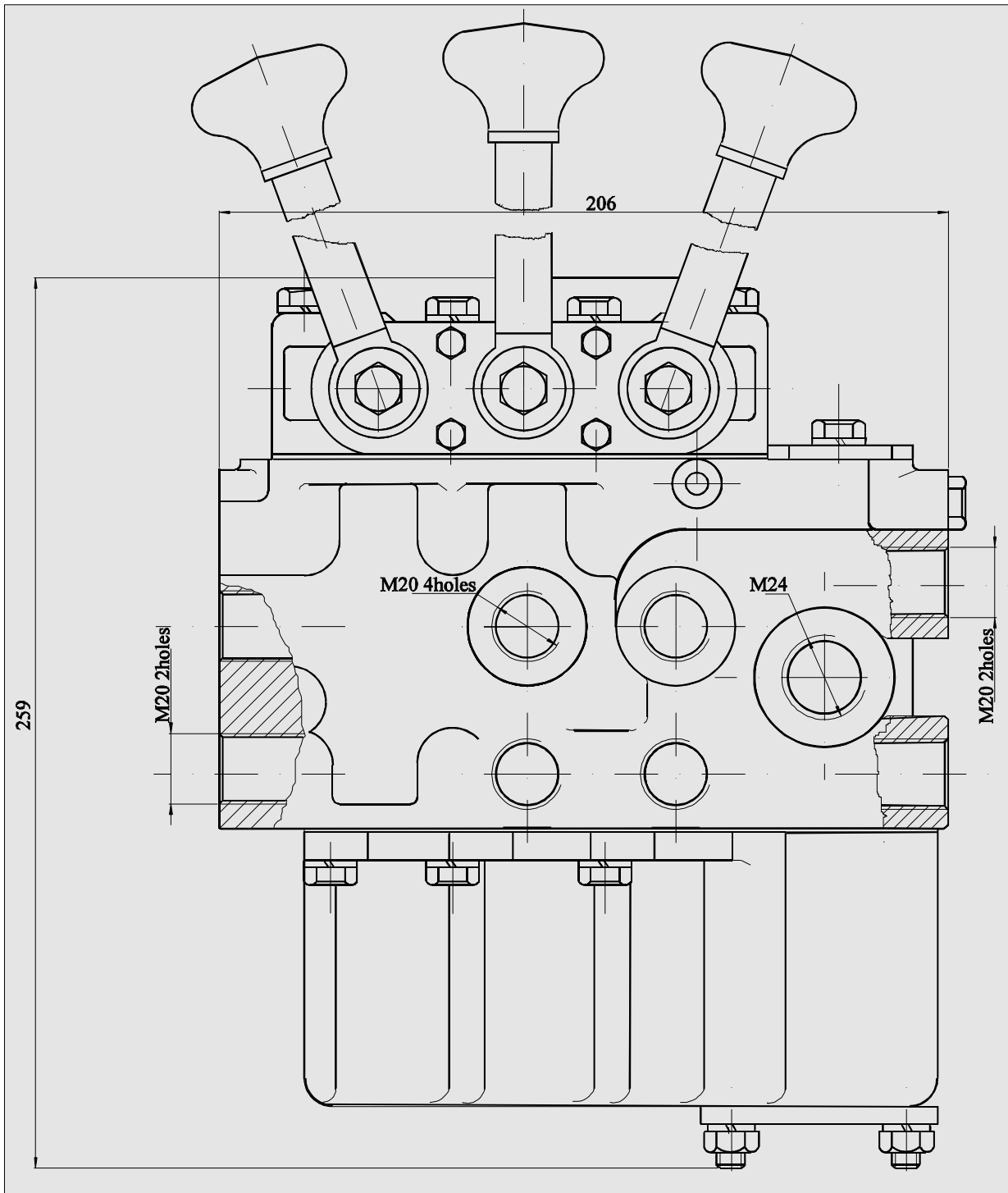
**Use:** to equip the tractors engines of 45HP  
D111,D115,D127

**Purpose:** it provides the transport of the pressured  
oil into the motor greasing circuit

### TECHNICAL FEATURES

- \* **min.flow:** 1,9 lpm (at a speed of 300rpm and a lifting pressure of 5 bars )  
23 lpm (at a speed of 1200rpm and a lifting pressure of 5 bars )
- \* **the suction column height:** 200+10mm
- \* **onset period:** max. 3s
- \* **overall dimensions:** 289x103x72 mm
- \* **net weight :** 1.5 Kg.

**DISTRIBUTOR D6 - D6 DISTRIBUTOR**



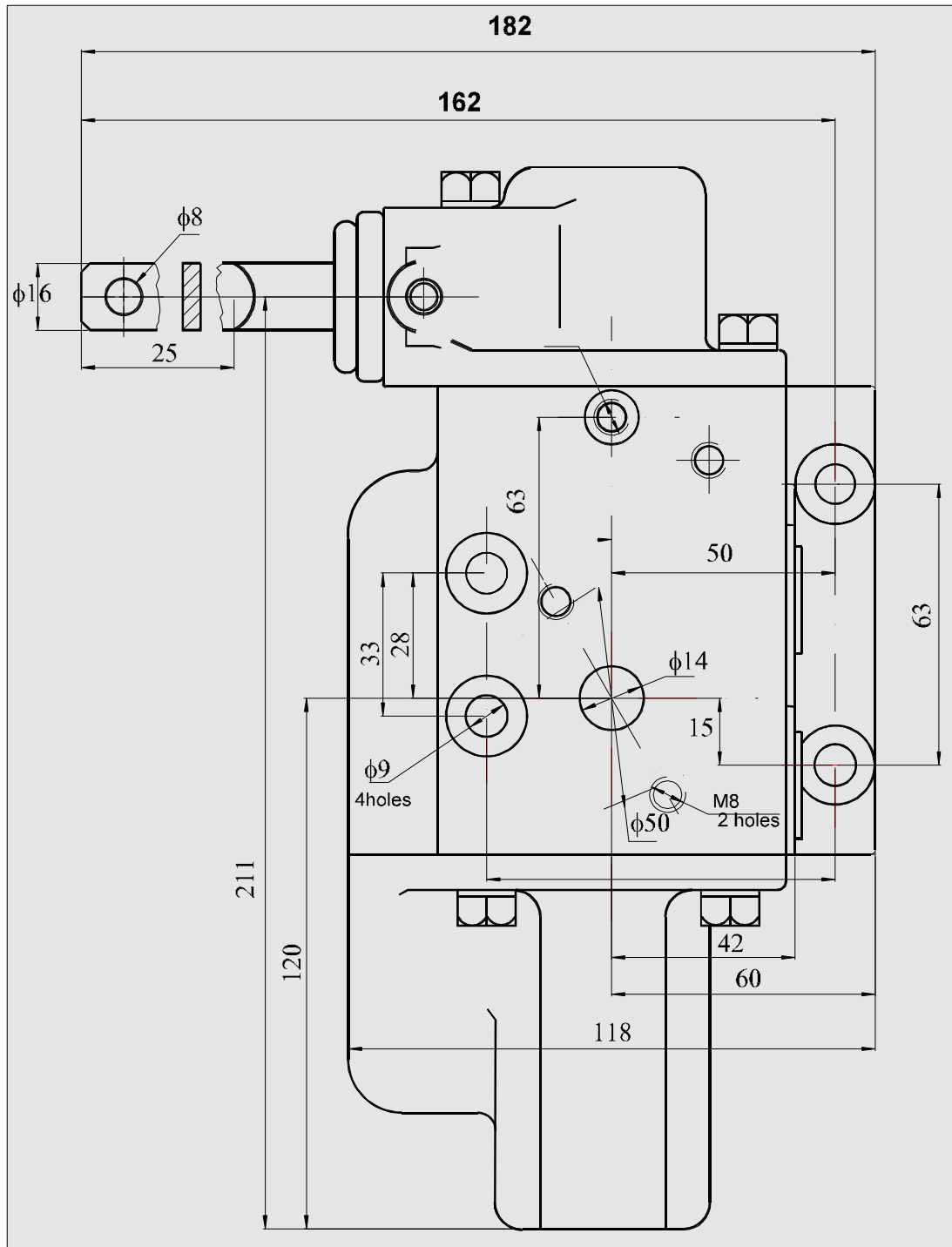
**CARACTERISTICI**

- Nr.de sectiuni:3,cu actionare independenta
- Alternativa functionare:coborare,urcare,flotant si neutru,cu revenire automata in pozitie neutra
- Comanda sertarelor: manual
- Presiunea max. de lucru: 135 kgf/cmp.
- Presiunea de actionare: 95-110 kgf/cmp.
- Capacitatea de trecere: 75l/min.
- Greutate:13,4 Kg

**CHARACTERISTICS**

- No. of sections:3,with separate driving system
- Working positions:lifting,lowering,floating and neutral;automatic return to neutral position
- Slide valves control: manual
- Max. working pressure: 135 kgf per sqcm.
- Driving pressure:95-110 kgf per sqcm.
- Capacity: 75 l per min.
- Weight: 13.4 kg

## DISTRIBUITOR D 11 - D 11 DISTRIBUTOR



### CARACTERISTICI

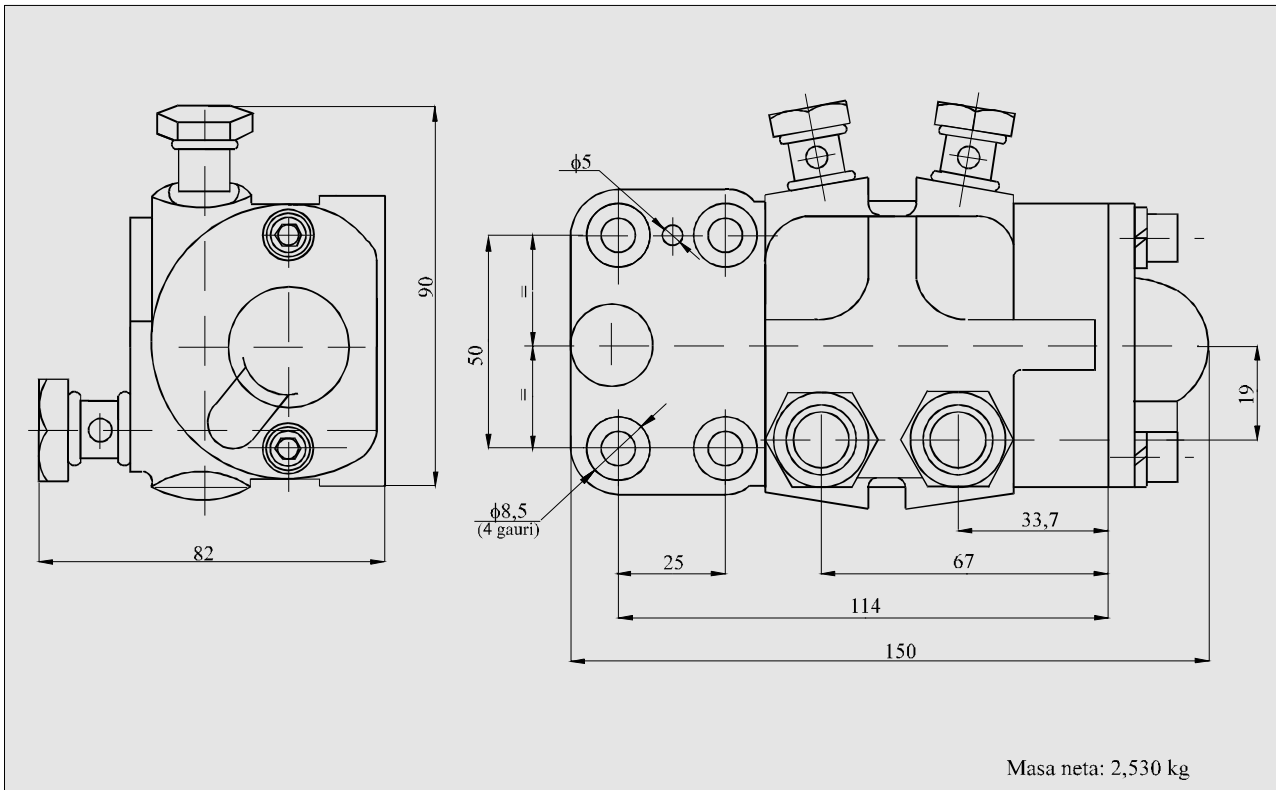
- Tipul distribuitorului: cu sertarase ,declansare automata
- Nr. de sectiuni: 2, cu actionare independenta
- Alternative de functionare: ridicare, neutru, coborare si flotant, cu revenire automata in pozitia neutru din poz. urcare si coborare.
- Presiunea de declansare a sertaraselor: 120 +10 kgf/cmp.
- Presiunea maxima de lucru: 150 kgf/cmp.
- Capacitatea de trecere: 50l/min.
- Greutate; 9,5 kg ight: 9.5 kg

### CHARACTERISTICS

- Distributor type: with slide-valves, automatic control
- No. of sections: 2, with separate driving system
- Working positions: lifting, lowering, floating, and neutral: automatic return to neutral position
- Slide-valves pressure: 120+10 Kgf per sqcm.
- Maximum working pressure: 150 kgf per sqcm.
- Capacity: 50 l per min.



**DISTRIBUITOR SERVODIRECTIE C.S. 61-00**



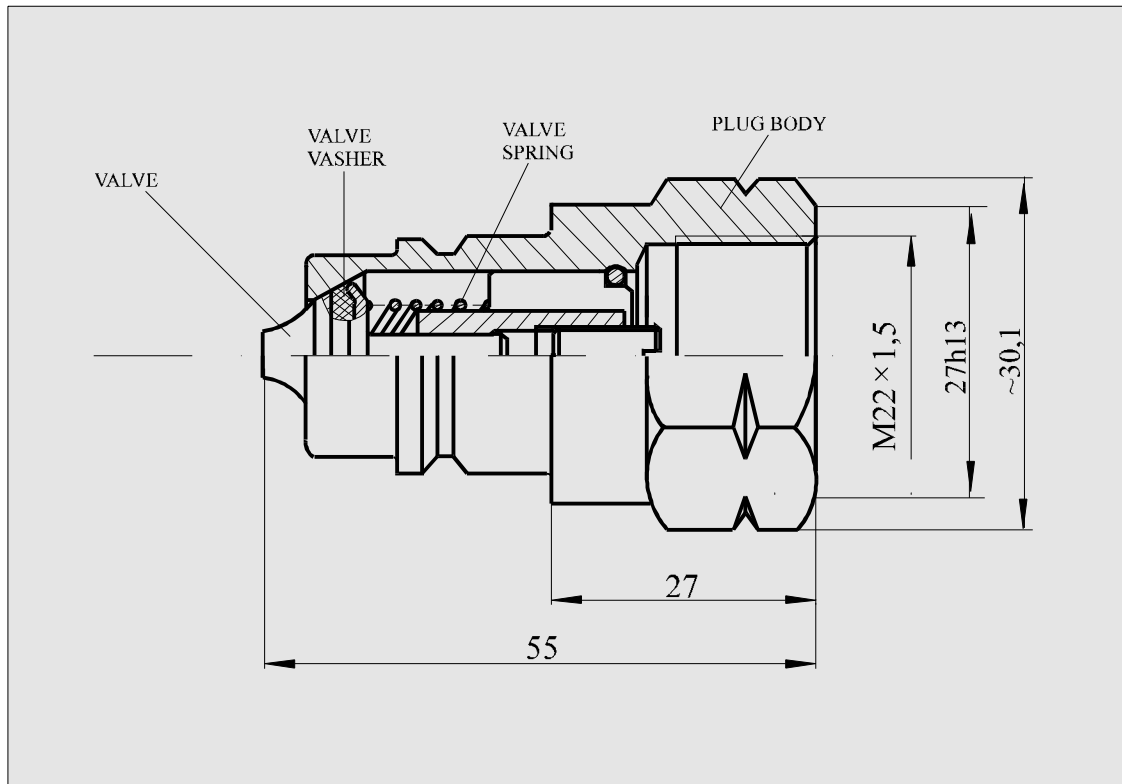
Distribuatorul hidraulic de servodirectie C.S.61-00 (identic cu reperul 38.33.036) se monteaza pe servomotorul hidraulic de directie tip 31.33.901 sau 38.33.902 prin intermediul caruia se modifica directia de inaintare a tractoarelor de 65 si 80 CP.

Caracteristici dimensionale:

- \* Diametrul sertarului - 25 mm
- \* Cursa totala a sertarului - 3 mm in ambele sensuri fata de pozitia de medie.
- \* Presiunea maxima de lucru - 80 bar.
- \* Viteza maxima de deplasare - 25 mm/sec. cremaliera
- \* Ulei T75 EP1 STAS 10667-80 sau echivalente la o temperatura de minim 20<sup>0</sup> C.

## QUICK CONNECT COUPLINGS

### 1. SEMICUPLA CONNECTION - MALE



#### Caracteristici tehnice :

- Diametrul nominal ..... Dn = 12 mm
- Debit nominal ..... Qn = 45 l / min
- Presiunea de lucru ..... P = 175 bar
- Lichid de lucru ..... ulei hidraulic
- Racordarea conform cotelor din desen
- Reper de comanda ..... 6108.58.0125

#### Destinatie :

Conectarea rapida a furtunelor de inalta presiune din componenta instalatiilor hidraulice

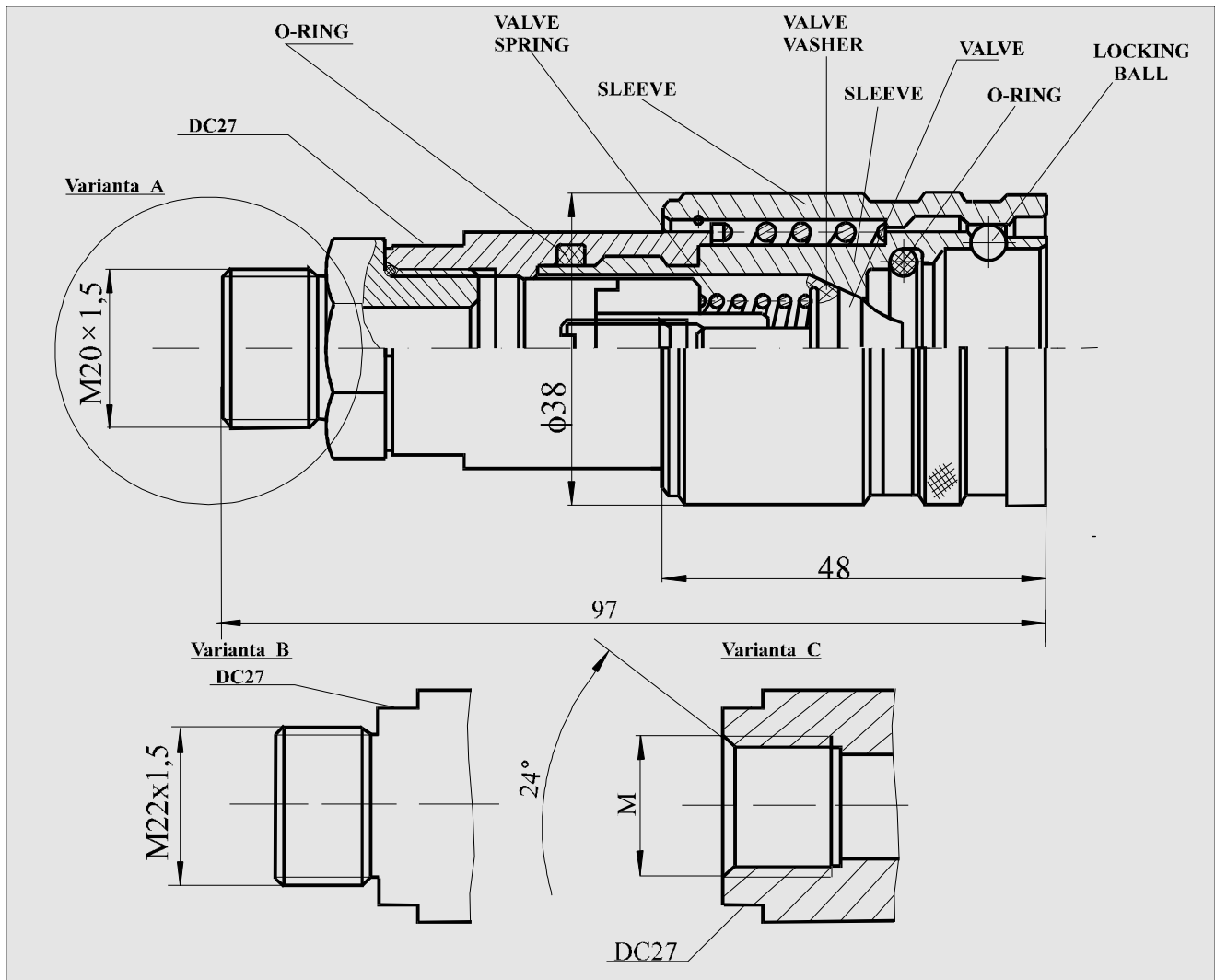
#### Technical features :

- Diameter ..... D = 12 mm
- Output ..... Qn = 45 l per min
- Operating pressure ..... P = 175 bar
- Operating fluid ..... hydraulic oil
- To be connected according to the drawing dimensions
- To be ordered under ..... 6108.58.0125

#### Destination :

Fast connection of the high pressure hoses ( components of the hydraulic instalations )

## 2. SEMICUPLA CONNECTION - FEMALE



### Caracteristici tehnice :

- Diametrul nominal ..... Dn = 12 mm
- Debit nominal ..... Qn = 45 l / min
- Presiunea de lucru ..... P = 175 bar
- Lichid de lucru ..... ulei hidraulic
- Racordarea conform cotelor din desen

### Technical features :

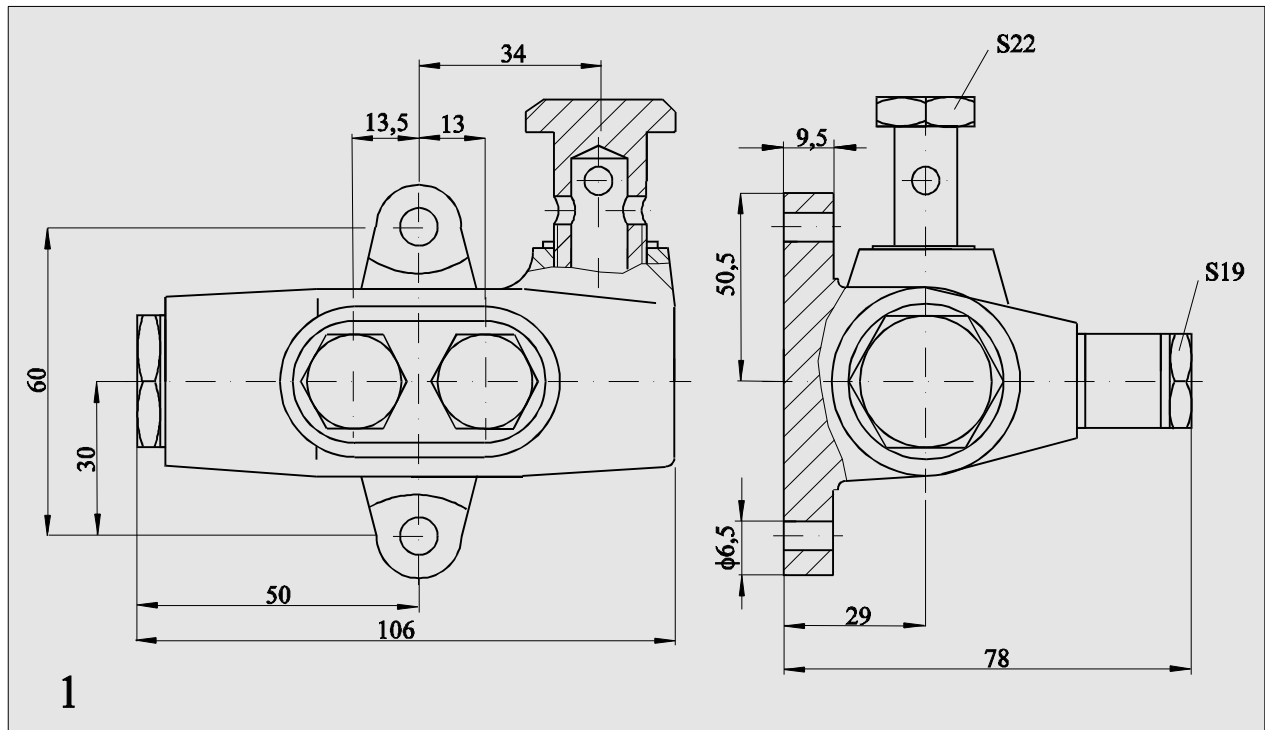
- Diameter ..... D = 12 mm
- Output ..... Qn = 45 l per min
- Operating pressure ..... P = 175 bar
- Operating fluid ..... hydraulic oil
- To be connected according to the drawing dimensions

Reper comanda Item	M	Varianta Variant	L	Destinatie Destination
38. 58. 844		A	109	Conectarea rapida a furtunelor de inalta presiune din componenta instalatiilor hidraulice.
6108. 55. 0120		B	88	
6108. 55. 0121	M22x1,5	C	84	Fast connection of the high pressure hoses ( components of the hydraulic instalations )
6108 . 55 . 0122	M20x1,5	C	84	

SC HIDROJET Breaza are posibilitatea executarii la comanda a unor componente hidraulice ce necesita conditii deosebite din punct de vedere al preciziei dimensionale, formei geometrice.

SC HIDROJET Breaza has the capability to execute, at order, hydraulic components which request special conditions of: dimensional precision, geometrical form.

## FUEL MATERING VALVE - SUPAPA



**1. FUEL MATERING VALVE** - used in poversteering hydraulic system of tractors

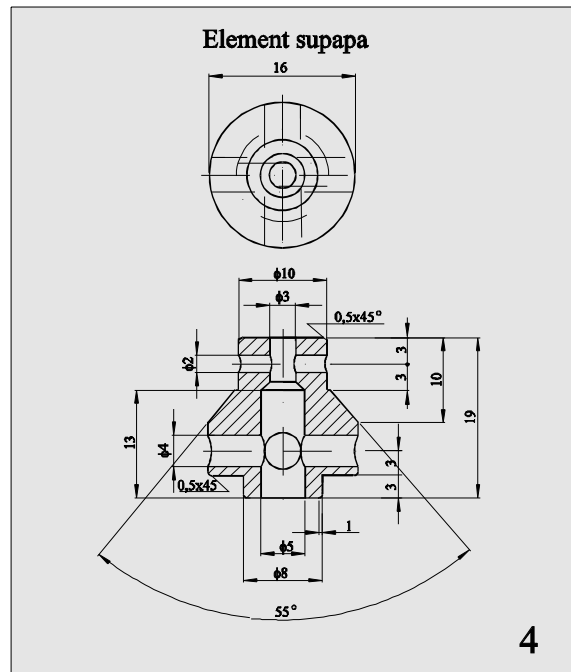
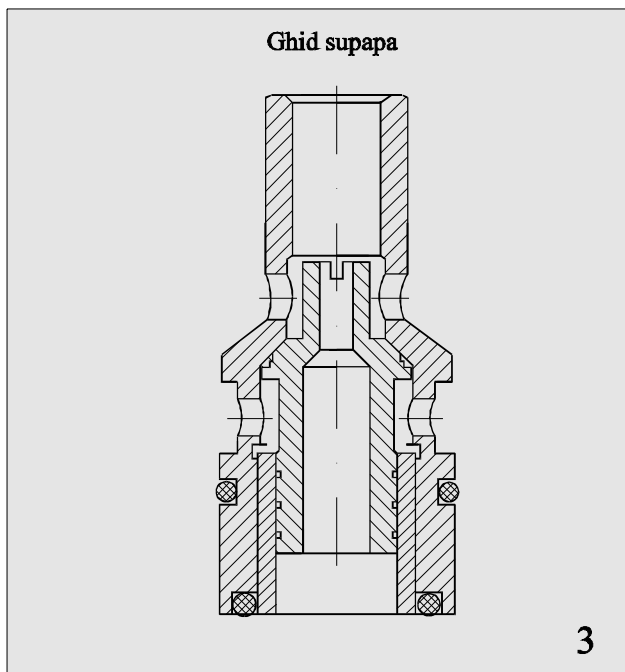
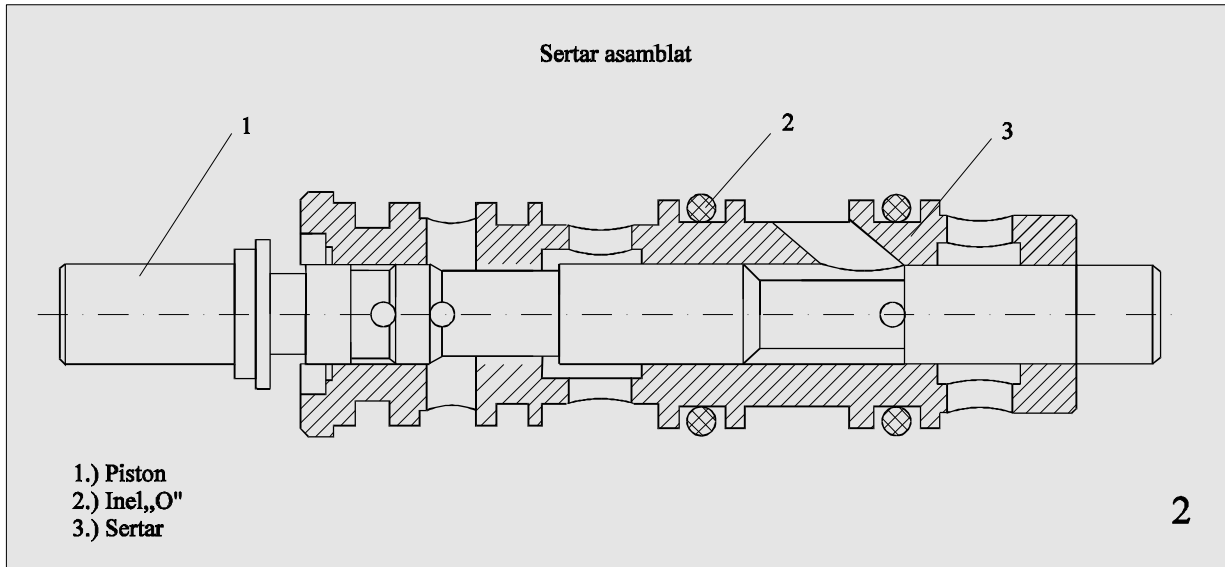
**1. SUPAPA** - folosita in sistemul hidraulic a tractoarelor

### 2. Characteristics

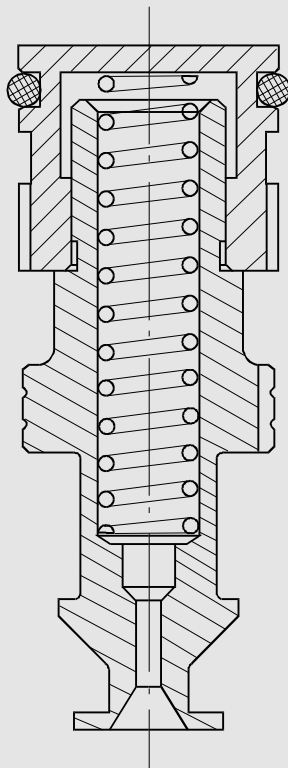
- Pressure range: 50.....80 Kp/sq. cm
- Constant flow :  $10 \pm 2$ l/min. with PH 13 pump with the speed within 1000 - 2200 r.p.m.
- Operating fluid : oil with anti-foaming, anti-oxidation and anti-corrosive additive. Oil viscosity must be within 36...40cSt at 50°C and 7,4 cSt at 100°C.
- Oil operating temperature : 50°C
- Maximum oil temperature : 80°C
- Greutate : 1,1 Kg

### 2. Caracteristici

- Gama de presiune: 50.....80 Kgf/cm<sup>3</sup>
- Debit constant :  $10 \pm 2$ l/min. cu pompa PH 13 cu viteza intre 1000-2200rot/min
- Fluid utilizat: ulei cu aditiv nespumos, antioxidant si anticorosiv. Vascozitatea uleiului trebuie sa fie intre 36...40 cSt la 50° si 7,4 cSt la 100°C.
- Temperatura normala de lucru : 50°C
- Temperatura maxima de lucru a uleiului: 80°C
- Greutate : 1,1 Kg



**SUPAPA DE TRECERE ASAMBLATA**  
**PASSING ASSEMBLED VALVE**



Utilizare: DISTRIBUTOR DH - 6